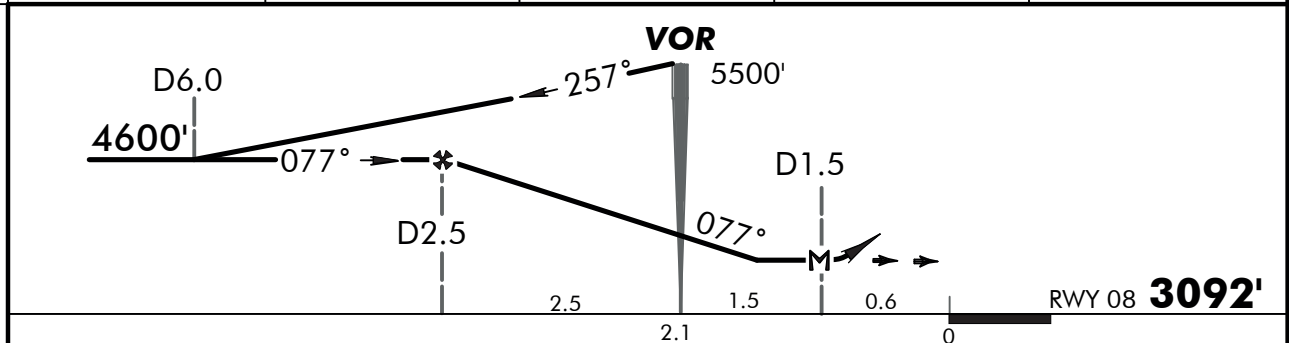
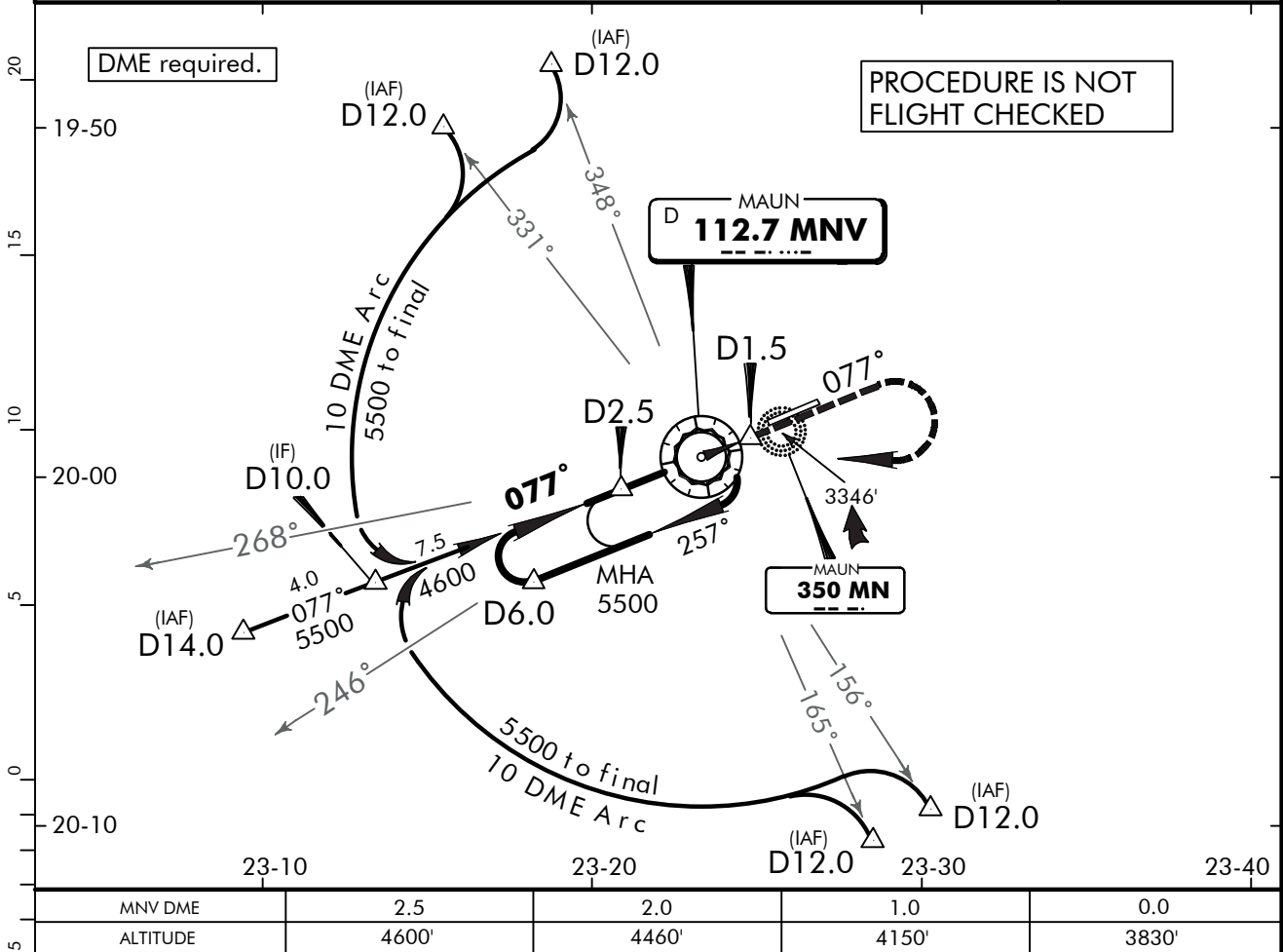


*MAUN Approach 126.0		*MAUN Tower 118.7		*Ground 121.9	
VOR MNV 112.7	Final Apch Crs 077°	Minimum Alt D2.5 4600' (1508')	MDA(H) 3600' (508')	Apt Elev 3094' RWY 3092'	5500'
MISSED APCH: Climb STRAIGHT AHEAD to 4400', then climbing turn RIGHT to join VOR holding at 5500', or as directed.					
Alt Set: hPa	Rwy Elev: 108 hPa	Trans level: By ATC	Trans alt: 7000'	MSA MNV VOR	



Gnd speed-Kts	70	90	100	120	140	160	PAPI-L 4400'
Descent angle	2.98°	369	474	527	633	738	
MAP at D1.5 after VOR							

STRAIGHT-IN LANDING RWY 08			CIRCLE-TO-LAND		
MDA(H) 3600' (508')			Max Kts	MDA(H)	
A	RVR 1500m		100	3650' (556')	1600m
B	VIS 1600m		135		
C	2400m		180	3740' (646')	2800m
D			205	3790' (696')	3600m

FOR FLIGHT SIMULATOR USE ONLY